



## Cowslip Drive, Redcar, TS10

£1,075 PCM

Situated in the seaside town of Redcar, Kirkleatham Green sits 8 miles east of Middlesbrough. With Redcar train station less than 2 miles away, the site offers direct and easy access to Middlesbrough, Darlington and Hartlepool. The area is also well connected by the nearby A19 taking you north to Sunderland and Tyneside or south to North Yorkshire.

The Wilton is substantial 3 bedroom property with something for everyone.

On the ground floor, you're welcomed by a generous hallway that leads you into a comfortable living area. Towards the back of the property, there is an open plan kitchen/diner fully fitted with appliances. This room features a set of French windows onto the private back garden helping to bring the outside in. This floor also benefits from a handy storage cupboard and a downstairs cloakroom.

Upstairs, there are 3 bedrooms and a modern, family bathroom. The main bedroom comes complete with fitted wardrobes and a private en-suite including shower. The first floor also benefits from a useful storage cupboard.

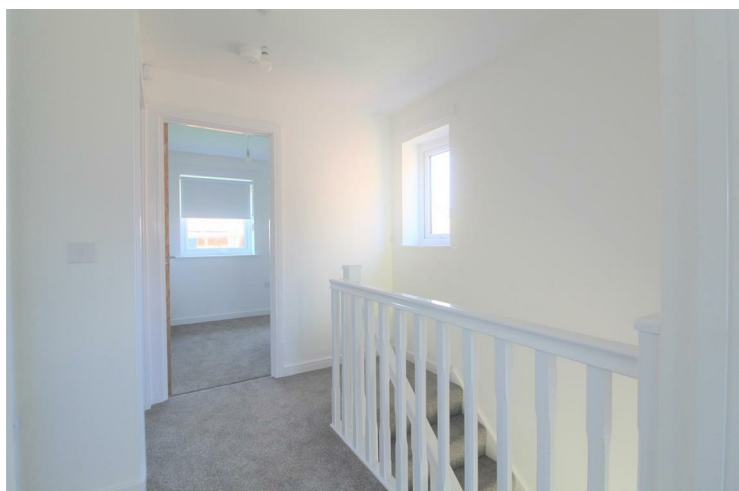
You'll have endless opportunities for leisure with easy access to Redcar's sandy beaches as well as the picturesque coast and riverside walks of the Tees Valley. The area delivers a range of pubs and restaurants as well as a popular weekly market in Redcar. To meet your shopping requirements, there is an Asda, Aldi and Sainsbury's all within 2 miles of the site.

The area benefits from 13 Ofsted rated good schools and 3 Ofsted rated outstanding schools within 3 miles of the site including Riverdale Primary School and Green Gates Primary School.

To access the site use post code TS10 4GY.

Deposit: £1240  
Holding deposit: £240  
Council tax: C  
Unfurnished  
Available 30th January 2026





## Key Features

- Car Parking Space
- Dishwasher
- Washing/drying machine
- Carpets up the stairs and in the bedrooms
- Blinds in the bedrooms
- Security Alarm
- Fridge-freezer
- Modern kitchen worktops and units
- Private back garden

## Location

